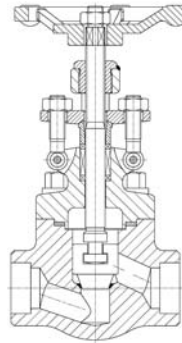


PN100**Design acc. :****AD 2000 A4****ATEX 2014/34/EU****API 602 .****Socket-welding : ASME B16.11 .****Screwed end: DIN259 (BSP) .****Test and inspection : DIN EN12266 .****Body : C22.8 / 1.4401****FIG : 106****Page 1****FIG : 106**

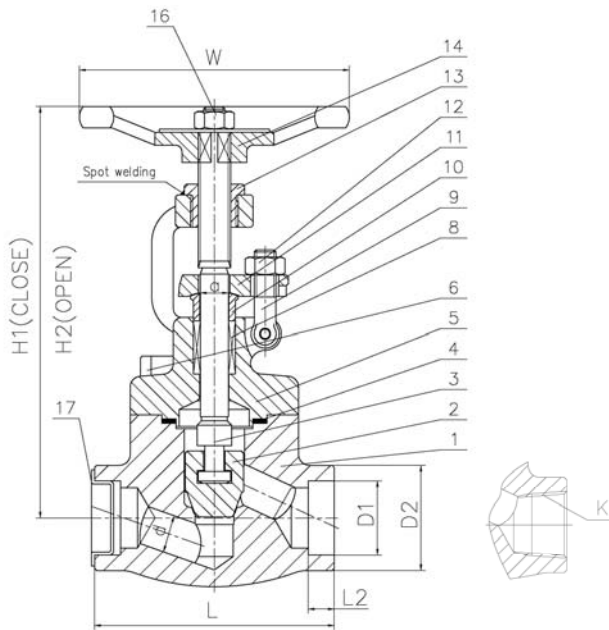


FIG.	PN	Material	Range
147.106	100	C22.8	DN10-DN50
237.106	100	1.4401	DN10-DN50

Design acc. :
AD 2000 A4
ATEX 2014/34/EU
API 602 .
Socket-welding : ASME B16.11 .
Screwed end : DIN259 (BSP) .
Test and inspection : DIN EN12266 .

Material List

NO.	Part	Material	
		FIG: 147.106	FIG: 237.106
1	Body	C22.8+STL	1.4401+STL
2	Disc	1.4021	1.4401
3	Stem	1.4006	1.4401
4	Bonnet gasket	Spiral wound graphite+1.4301	Spiral wound graphite+1.4401
5	Bonnet	C22.8	1.4401
6	Bolt	G	A4-70/A2-70
8	Packing	Flexible graphite +s.s.wire	Flexible graphite +s.s.wire
	Packing	Flexible graphite	Flexible graphite
9	Eyebolt	G	A4-70/A2-70
10	Packing bushing	1.4021	1.4401
11	Gland flange	C22.8	1.4401
12	Nut	YK	A4-70/A2-70
13	Stem nut	1.4006	ZCuAl10Fe3
14	Handwheel	A197	A197
16	Lock nut	YK	A4-70/A2-70

Dimension List

PN	DN	L	a	H1	H2	d	D	W	Socket-welding		Screwed end K (BSP55°)	Weight(KG)
									D1	L2		
100	10	79	11.5	148	158	6.5	34	100	17.6	9.6	3/8"	2.1
	15	79	11.5	148	158	10	34	100	21.7	9.6	1/2"	2.0
	20	92	11.5	148	158	13	40	100	27.1	12.7	3/4"	2.2
	25	111	13	176	192	17.5	49	125	33.8	12.7	1"	3.8
	32	120	16	209	227	23	58	160	42.6	12.7	1 1/4"	5.5
	40	152	16	221	241	28.5	64	160	48.6	12.7	1 1/2"	7.1
	50	172	20	255	279	35	78	180	61.1	15.9	2"	11.5